



GAT MONTHLY MEMBERSHIP PROGRESS REPORT

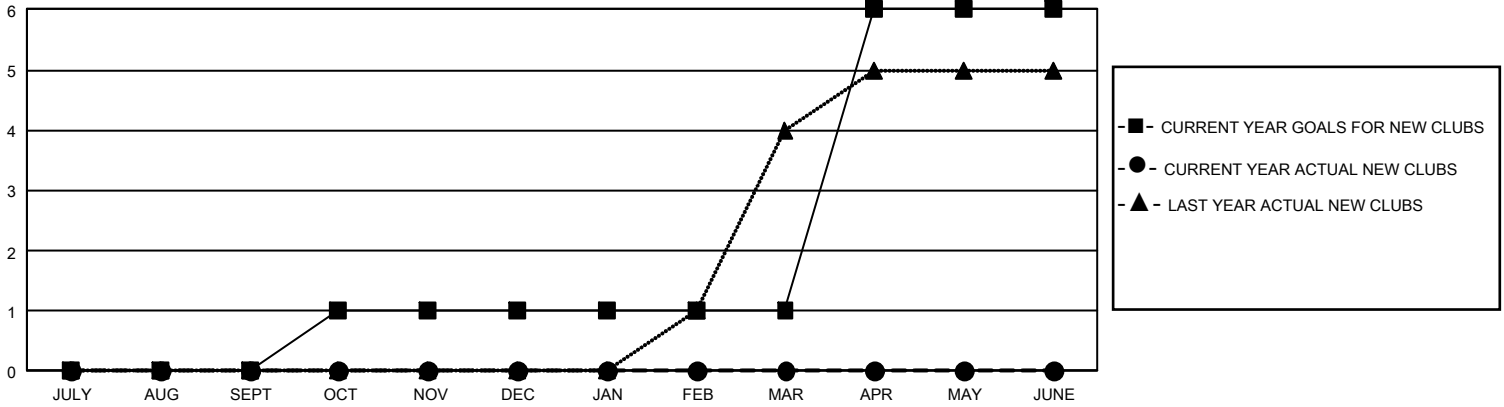
Results as of: 3/31/2022

GMT Constitutional Area 7, Group B

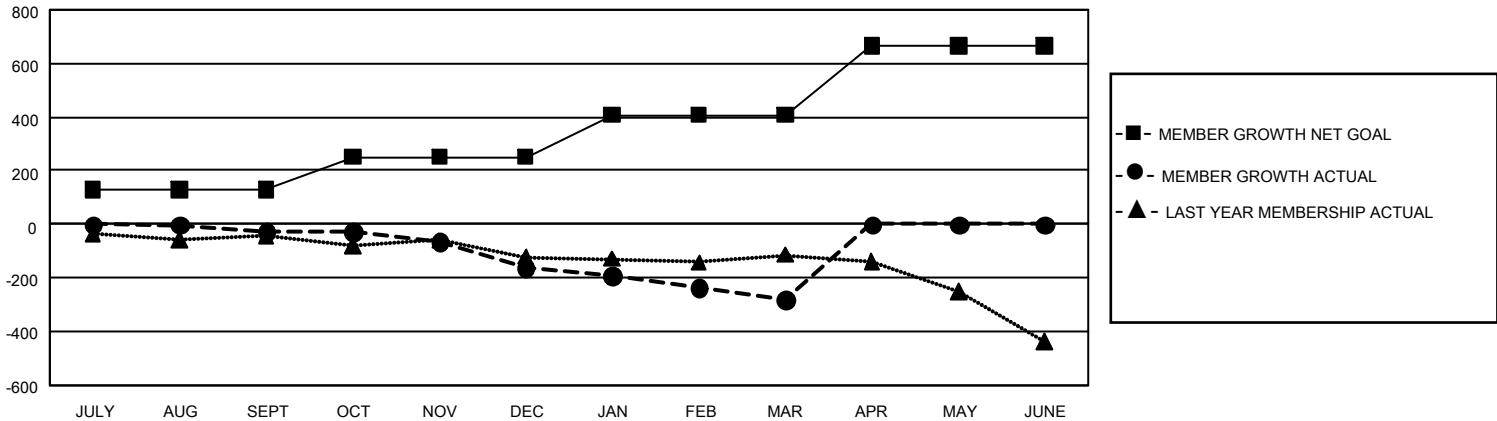
REPORT DOES NOT INCLUDE CLUBS IN UNDISTRICTED AREAS.

| Clubs | | | | Members | | | |
|-----------------------|---------------|-----------|---------------|-----------------------|------------------------|----------------------|--|
| RESULTS FOR 2021-2022 | | | | RESULTS FOR 2021-2022 | | | |
| QUARTER | NEW CLUB GOAL | NEW CLUBS | DROPPED CLUBS | QUARTER | MEMBER GROWTH NET GOAL | MEMBER GROWTH ACTUAL | DROPPED MEMBERS ACTUAL (including transfers) |
| JULY/AUG/SEPT | 0 | 0 | 5 | JULY/AUG/SEPT | 128 | 180 | 165 |
| OCT/NOV/DEC | 3 | 0 | 3 | OCT/NOV/DEC | 123 | 162 | 268 |
| JAN/FEB/MAR | 0 | 0 | 4 | JAN/FEB/MAR | 157 | 84 | 184 |
| APR/MAY/JUNE | 15 | 0 | 0 | APR/MAY/JUNE | 257 | 0 | 0 |

GOALS AND ACTUAL NEW CLUBS CUMULATIVE



GOALS AND ACTUAL MEMBERS CUMULATIVE



| | | | |
|-------------------------------|---|-------------------------------------|--------------------------------|
| DROPPED CLUBS: 12 | 161 CLUBS OF 323 ADDED 1 OR MORE NEW MEMBERS | <u>GENDER DISTRIBUTION</u> | |
| | | MALE 5,633 (68.27%) | FEMALE 2,617 (31.72%) |
| <u>DROPPED MEMBERS</u> | | NON BINARY 1 (0.01%) | PREFER NOT TO ANSWER 0 (0.00%) |
| DECEASED 97 | CLICK HERE FOR CUMULATIVE MEMBERSHIP DATA | TOTAL FAMILY UNIT MEMBERS 742 | |
| CLUB CANCELLED 4 | | FAMILY MEMBERS PAYING HALF DUES 374 | |
| OTHER 516 | | | |
| TOTAL 617 | | | |